

Insulated Strands and Wires



Cable Solutions for Industries

THE QUALITY CONNECTION

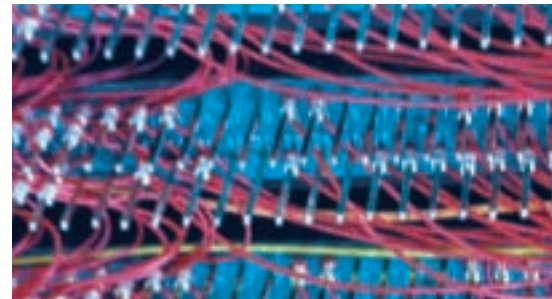
LEONI

Wire • Cable • Wiring Systems

LEONI Special Cables

LEONI Special Cables stands for many years of experience and innovation within the field of cables and cable systems. Our catalogues give you an overview of the variety of cables we offer. You can find the most frequently used types ranging from insulated wires and strands to coaxial cables and cable assemblies.

In addition we develop and manufacture many more cable varieties than can be shown in our brochures. Please contact us if you are looking for a product to suit your special application. Together we create your cable solution.



Cable Solutions for Industries



- 4** Single wires with PVC-insulation
- 12** Twisted wires with PVC-insulation
- 14** Twisted wires with PVC-insulation and shielding
- 16** Wires with ETFE-insulation
- 18** Insulated wires for special applications
- 20** Single stranded wires with PVC-insulation
- 26** Stranded wires with PVC-insulation, twisted
- 28** Stranded wires with ETFE-insulation
- 32** Insulated, stranded wires for special applications
- 35** Customer benefit by means of quality and flexibility

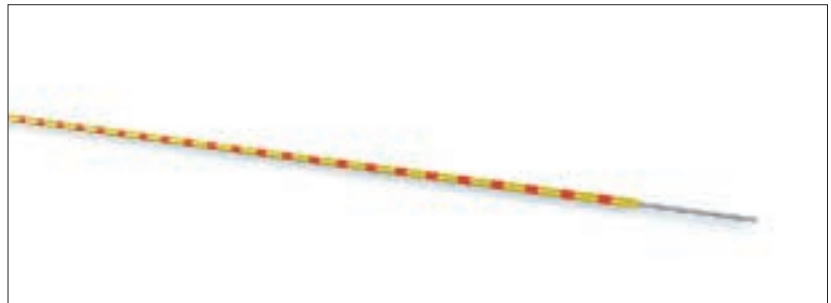
Single wires with PVC-insulation

PVC-insulated wire

VDE 0812

Type: YV 1x0,3/0,7 GERT

Order-No.: H50402-A 307-A 34



Application

These cables are commonly used for electronic, information processing and telecommunications applications to connect fixed devices or installations.

Construction

Round copper wires, bare or tinned
Insulation of PVC.

Constructions are available complying with

- DIN VDE, MIL, BS, EN, IEC
- UL and CSA

Technical characteristics

vary according to the relevant specification

Core identification

Colour coding,
ring marking or number printing

Operating voltage

up to 3000 V

Test voltage

up to 4000 V

Temperature range

for standard applications
– 5 °C up to 70 °C

for advanced requirements
– 20 °C up to 80 °C (105 °C)

Con- ductor	Annotation	Type designation	Outer-Ø	Copper value	Net weight	Delivery length	Packaging	Order-Number
Wire-Ø mm			mm	kg/km	kg/km	m		
0.16	UL-Style 1692, CSA	YV 0.16/0.5 VZN GN	0.5	0.2	0.4	5000	coil	V45562-B 105-A
0.16	UL-Style 1692, CSA	YV 0.16/0.5 VZN SW	0.5	0.2	0.4	5000	coil	V45562-B 110-A
0.3	VDE 0812	YV 1x0.3/0.7 WS	0.7	0.8	1.1	1500	cone	H50402-A 307-A 1
0.3	VDE 0812	YV 1x0.3/0.7 RT	0.7	0.8	1.1	1500	cone	H50402-A 307-A 2
0.3	VDE 0812	YV 1x0.3/0.7 GE	0.7	0.8	1.1	1500	cone	H50402-A 307-A 4
0.3	VDE 0812	YV 1x0.3/0.7 GN	0.7	0.8	1.1	1500	cone	H50402-A 307-A 5
0.3	VDE 0812	YV 1x0.3/0.7 BL	0.7	0.8	1.1	1500	cone	H50402-A 307-A 6
0.3	VDE 0812	YV 1x0.3/0.7 GR	0.7	0.8	1.1	1500	cone	H50402-A 307-A 8
0.3	VDE 0812	YV 1x0.3/0.7 WS	0.7	0.8	1.1	1500	cone	H50402-A 307-A 9
0.3	VDE 0812	YV 1x0.3/0.7 SW	0.7	0.8	1.1	1500	cone	H50402-A 307-A 10
0.3	VDE 0812	YV 1x0.3/0.7 RS	0.7	0.8	1.1	1500	cone	H50402-A 307-A 11
0.3	VDE 0812	YV 1x0.3/0.7 WSGN	0.7	0.8	1.2	1500	cone	H50402-A 307-A 21
0.3	VDE 0812	YV 1x0.3/0.7 WSGE	0.7	0.8	1.2	1500	cone	H50402-A 307-A 22
0.3	VDE 0812	YV 1x0.3/0.7 WSBL	0.7	0.8	1.2	1500	cone	H50402-A 307-A 23
0.3	VDE 0812	YV 1x0.3/0.7 WSSW	0.7	0.8	1.2	1500	cone	H50402-A 307-A 24
0.3	VDE 0812	YV 1x0.3/0.7 WSBR	0.7	0.8	1.2	1500	cone	H50402-A 307-A 26
0.3	VDE 0812	YV 1x0.3/0.7 BRGN	0.7	0.8	1.2	1500	cone	H50402-A 307-A 27
0.3	VDE 0812	YV 1x0.3/0.7 GEBR	0.7	0.8	1.2	1500	cone	H50402-A 307-A 28
0.3	VDE 0812	YV 1x0.3/0.7 BRBL	0.7	0.8	1.2	1500	cone	H50402-A 307-A 29
0.3	VDE 0812	YV 1x0.3/0.7 BRSW	0.7	0.8	1.2	1500	cone	H50402-A 307-A 30
0.3	VDE 0812	YV 1x0.3/0.7 GNGE	0.7	0.8	1.2	1500	cone	H50402-A 307-A 31
0.3	VDE 0812	YV 1x0.3/0.7 GNRT	0.7	0.8	1.2	1500	cone	H50402-A 307-A 32
0.3	VDE 0812	YV 1x0.3/0.7 GNSW	0.7	0.8	1.2	1500	cone	H50402-A 307-A 33
0.3	VDE 0812	YV 1x0.3/0.7 GERT	0.7	0.8	1.2	1500	cone	H50402-A 307-A 34
0.3	VDE 0812	YV 1x0.3/0.7 GESW	0.7	0.8	1.2	1500	cone	H50402-A 307-A 36
0.3	VDE 0812	YV 1x0.3/0.7 RTBL	0.7	0.8	1.2	1500	cone	H50402-A 307-A 37
0.3	VDE 0812	YV 1x0.3/0.7 RTSW	0.7	0.8	1.2	1500	cone	H50402-A 307-A 38
0.3	VDE 0812	YV 1x0.3/0.7 GRRT	0.7	0.8	1.2	1500	cone	H50402-A 307-A 39
0.4		YV 0.4/0.8 VZN BL	0.8	1.4	1.7	1000	cone	H50402-A 408-A 6
0.4		YV 0.4/0.8 VZN GESW	0.8	1.4	1.7	1000	cone	H50402-A 408-A 36

Single wires with PVC-insulation

Con- ductor	Annotation	Type designation	Outer-Ø	Copper value	Net weight	Delivery length	Packaging	Order-Number
Wire-Ø mm			mm	kg/km	kg/km	m		
0.5	VDE 0812	YV 1x0.5/0.9 BR	0.9	2.1	2.4	1000	cone	H50402-A 509-A 1
0.5	VDE 0812	YV 1x0.5/0.9 BR	0.9	2.1	2.4	250	cone	H50402-A 509-A 1-96
0.5	VDE 0812	YV 1x0.5/0.9 RT	0.9	2.1	2.4	1000	cone	H50402-A 509-A 2
0.5	VDE 0812	YV 1x0.5/0.9 RT	0.9	2.1	2.4	250	cone	H50402-A 509-A 2-96
0.5	VDE 0812	YV 1x0.5/0.9 GE	0.9	2.1	2.4	1000	cone	H50402-A 509-A 4
0.5	VDE 0812	YV 1x0.5/0.9 GE	0.9	2.1	2.4	250	cone	H50402-A 509-A 4-96
0.5	VDE 0812	YV 1x0.5/0.9 GN	0.9	2.1	2.4	1000	cone	H50402-A 509-A 5
0.5	VDE 0812	YV 1x0.5/0.9 GN	0.9	2.1	2.4	250	cone	H50402-A 509-A 5-96
0.5	VDE 0812	YV 1x0.5/0.9 BL	0.9	2.1	2.4	1000	cone	H50402-A 509-A 6
0.5	VDE 0812	YV 1x0.5/0.9 BL	0.9	2.1	2.4	250	cone	H50402-A 509-A 6-96
0.5	VDE 0812	YV 1x0.5/0.9 GR	0.9	2.1	2.4	1000	cone	H50402-A 509-A 8
0.5	VDE 0812	YV 1x0.5/0.9 GR	0.9	2.1	2.4	250	cone	H50402-A 509-A 8-96
0.5	VDE 0812	YV 1x0.5/0.9 WS	0.9	2.1	2.4	1000	cone	H50402-A 509-A 9
0.5	VDE 0812	YV 1x0.5/0.9 WS	0.9	2.1	2.4	250	cone	H50402-A 509-A 9-96
0.5	VDE 0812	YV 1x0.5/0.9 SW	0.9	2.1	2.4	1000	cone	H50402-A 509-A 10
0.5	VDE 0812	YV 1x0.5/0.9 SW	0.9	2.1	2.4	250	cone	H50402-A 509-A 10-96
0.5	VDE 0812	YV 1x0.5/0.9 RS	0.9	2.1	2.4	1000	cone	H50402-A 509-A 11
0.5	VDE 0812	YV 1x0.5/0.9 RS	0.9	2.1	2.4	250	cone	H50402-A 509-A 11-96
0.5	VDE 0812	YV 1x0.5/0.9 WSGN	0.9	2.1	2.4	1000	cone	H50402-A 509-A 21
0.5	VDE 0812	YV 1x0.5/0.9 WSGN	0.9	2.1	2.4	250	cone	H50402-A 509-A 21-96
0.5	VDE 0812	YV 1x0.5/0.9 WSGE	0.9	2.1	2.4	1000	cone	H50402-A 509-A 22
0.5	VDE 0812	YV 1x0.5/0.9 WSGE	0.9	2.1	2.4	250	cone	H50402-A 509-A 22-96
0.5	VDE 0812	YV 1x0.5/0.9 WSBL	0.9	2.1	2.4	1000	cone	H50402-A 509-A 23
0.5	VDE 0812	YV 1x0.5/0.9 WSBL	0.9	2.1	2.4	250	cone	H50402-A 509-A 23-96
0.5	VDE 0812	YV 1x0.5/0.9 WSSW	0.9	2.1	2.4	1000	cone	H50402-A 509-A 24
0.5	VDE 0812	YV 1x0.5/0.9 WSBR	0.9	2.1	2.4	1000	cone	H50402-A 509-A 26
0.5	VDE 0812	YV 1x0.5/0.9 BRGN	0.9	2.1	2.4	1000	cone	H50402-A 509-A 27
0.5	VDE 0812	YV 1x0.5/0.9 BRGN	0.9	2.1	2.4	250	cone	H50402-A 509-A 27-96
0.5	VDE 0812	YV 1x0.5/0.9 GE BR	0.9	2.1	2.4	1000	cone	H50402-A 509-A 28
0.5	VDE 0812	YV 1x0.5/0.9 GE BR	0.9	2.1	2.4	250	cone	H50402-A 509-A 28-96

Single wires with PVC-insulation

Con- ductor	Annotation	Type designation	Outer-Ø	Copper value	Net weight	Delivery length	Packaging	Order-Number
Wire-Ø mm			mm	kg/km	kg/km	m		
0.5	VDE 0812	YV 1x0.5/0.9 BRBL	0.9	2.1	2.4	250	cone	H50402-A 509-A 29-96
0.5	VDE 0812	YV 1x0.5/0.9 BR/SW	0.9	2.1	2.4	1000	cone	H50402-A 509-A 30
0.5	VDE 0812	YV 1x0.5/0.9 GNGE	0.9	2.1	2.4	1000	cone	H50402-A 509-A 31
0.5	VDE 0812	YV 1x0.5/0.9 GNGE	0.9	2.1	2.4	250	cone	H50402-A 509-A 31-96
0.5	VDE 0812	YV 1x0.5/0.9 GNRT	0.9	2.1	2.4	1000	cone	H50402-A 509-A 32
0.5	VDE 0812	YV 1x0.5/0.9 GNRT	0.9	2.1	2.4	250	cone	H50402-A 509-A 32-96
0.5	VDE 0812	YV 1x0.5/0.9 GNSW	0.9	2.1	2.4	1000	cone	H50402-A 509-A 33
0.5	VDE 0812	YV 1x0.5/0.9 GNSW	0.9	2.1	2.4	250	cone	H50402-A 509-A 33-96
0.5	VDE 0812	YV 1x0.5/0.9 GERT	0.9	2.1	2.4	1000	cone	H50402-A 509-A 34
0.5	VDE 0812	YV 1x0.5/0.9 GERT	0.9	2.1	2.4	250	cone	H50402-A 509-A 34-96
0.5	VDE 0812	YV 1x0.5/0.9 GESW	0.9	2.1	2.4	1000	cone	H50402-A 509-A 36
0.5	VDE 0812	YV 0.5/0.9 RT/BL	0.9	2.1	2.4	1000	cone	H50402-A 509-A 37
0.5	VDE 0812	YV 1x0.5/0.9 RT/BL	0.9	2.1	2.4	250	cone	H50402-A 509-A 37-96
0.5	VDE 0812	YV 1x0.5/0.9 RT/SW	0.9	2.1	2.4	1000	cone	H50402-A 509-A 38
0.5	VDE 0812	YV 1x0.5/0.9 RT/SW	0.9	2.1	2.4	250	cone	H50402-A 509-A 38-96
0.5	VDE 0812	YV 1x0.5/0.9 GRRT	0.9	2.1	2.4	1000	cone	H50402-A 509-A 39
0.5	VDE 0812	YV 1x0.5/0.9 GRSW	0.9	2.1	2.4	1000	cone	H50402-A 509-A 40
0.5	VDE 0812	YV 1x0.5/1.1 BR	1.1	2.1	2.8	1000	cone	H50402-A 511-A 1
0.5	VDE 0812	YV 1x0.5/1.1 BR	1.1	2.1	2.8	250	cone	H50402-A 511-A 1-A6
0.5	VDE 0812	YV 1x0.5/1.1 RT	1.1	2.1	2.8	1000	cone	H50402-A 511-A 2
0.5	VDE 0812	YV 1x0.5/1.1 RT	1.1	2.1	2.8	250	cone	H50402-A 511-A 2-A6
0.5	VDE 0812	YV 1x0.5/1.1 GE	1.1	2.1	2.8	1000	cone	H50402-A 511-A 4
0.5	VDE 0812	YV 1x0.5/1.1 GE	1.1	2.1	2.8	250	cone	H50402-A 511-A 4-A6
0.5	VDE 0812	YV 1x0.5/1.1 GN	1.1	2.1	2.8	1000	cone	H50402-A 511-A 5
0.5	VDE 0812	YV 1x0.5/1.1 GN	1.1	2.1	2.8	250	cone	H50402-A 511-A 5-A6
0.5	VDE 0812	YV 1x0.5/1.1 BL	1.1	2.1	2.8	1000	cone	H50402-A 511-A 6
0.5	VDE 0812	YV 1x0.5/1.1 BL	1.1	2.1	2.8	250	cone	H50402-A 511-A 6-A6
0.5	VDE 0812	YV 1x0.5/1.1 VI	1.1	2.1	2.8	1000	cone	H50402-A 511-A 7
0.5	VDE 0812	YV 1x0.5/1.1 GR	1.1	2.1	2.8	1000	cone	H50402-A 511-A 8
0.5	VDE 0812	YV 1x0.5/1.1 GR	1.1	2.1	2.8	250	cone	H50402-A 511-A 8-A6

Single wires with PVC-insulation

Con- ductor	Annotation	Type designation	Outer-Ø	Copper value	Net weight	Delivery length	Packaging	Order-Number
Wire-Ø mm			mm	kg/km	kg/km	m		
0.5	VDE 0812	YV 1x0.5/1.1 WS	1.1	2.1	2.8	1000	cone	H50402-A 511-A 9
0.5	VDE 0812	YV 1x0.5/1.1 WS	1.1	2.1	2.8	250	cone	H50402-A 511-A 9-A6
0.5	VDE 0812	YV 1x0.5/1.1 SW	1.1	2.1	2.8	1000	cone	H50402-A 511-A 10
0.5	VDE 0812	YV 1x0.5/1.1 RS	1.1	2.1	2.8	1000	cone	H50402-A 511-A 11
0.5	VDE 0812	YV 1x0.5/1.1 WSGN	1.1	2.1	2.8	1000	cone	H50402-A 511-A 21
0.5	VDE 0812	YV 1x0.5/1.1 WSGE	1.1	2.1	2.8	1000	cone	H50402-A 511-A 22
0.5	VDE 0812	YV 1x0.5/1.1 WSBL	1.1	2.1	2.8	1000	cone	H50402-A 511-A 23
0.5	VDE 0812	YV 1x0.5/1.1 WSSW	1.1	2.1	2.8	1000	cone	H50402-A 511-A 24
0.5	VDE 0812	YV 1x0.5/1.1 WSRT	1.1	2.1	2.8	1000	cone	H50402-A 511-A 25
0.5	VDE 0812	YV 1x0.5/1.1 WSBR	1.1	2.1	2.8	1000	cone	H50402-A 511-A 26
0.5	VDE 0812	YV 1x0.5/1.1 BRGN	1.1	2.1	2.8	1000	cone	H50402-A 511-A 27
0.5	VDE 0812	YV 1x0.5/1.1 GEBR	1.1	2.1	2.8	1000	cone	H50402-A 511-A 28
0.5	VDE 0812	YV 1x0.5/1.1 BRBL	1.1	2.1	2.8	1000	cone	H50402-A 511-A 29
0.5	VDE 0812	YV 1x0.5/1.1 GEGN	1.1	2.1	2.8	1000	cone	H50402-A 511-A 31
0.5	VDE 0812	YV 1x0.5/1.1 GNRT	1.1	2.1	2.8	1000	cone	H50402-A 511-A 32
0.5	VDE 0812	YV 1x0.5/1.1 GNSW	1.1	2.1	2.8	1000	cone	H50402-A 511-A 33
0.5	VDE 0812	YV 1x0.5/1.1 GERT	1.1	2.1	2.8	1000	cone	H50402-A 511-A 34
0.5	VDE 0812	YV 1x0.5/1.1 GERT	1.1	2.1	2.8	250	cone	H50402-A 511-A 34-A6
0.5	VDE 0812	YV 1x0.5/1.1 GEBL	1.1	2.1	2.8	1000	cone	H50402-A 511-A 35
0.5	VDE 0812	YV 1x0.5/1.1 GESW	1.1	2.1	2.8	1000	cone	H50402-A 511-A 36
0.5	VDE 0812	YV 1x0.5/1.1 GESW	1.1	2.1	2.8	250	cone	H50402-A 511-A 36-A6
0.5	VDE 0812	YV 1x0.5/1.1 RTBL	1.1	2.1	2.8	1000	cone	H50402-A 511-A 37
0.5	VDE 0812	YV 1x0.5/1.1 RTSW	1.1	2.1	2.8	1000	cone	H50402-A 511-A 38
0.5	VDE 0812	YV 1x0.5/1.1 GRRT	1.1	2.1	2.8	1000	cone	H50402-A 511-A 39
0.5	VDE 0812	YV 1x0.5/1.1 GRRT	1.1	2.1	2.8	250	cone	H50402-A 511-A 39-A6
0.5	VDE 0812	YV 1x0.5/1.1 GRSW	1.1	2.1	2.8	1000	cone	H50402-A 511-A 40
0.5	UL-Style 1095	YV 1x0.5/1.1 BR	1.1	2.1	2.8	500	cone	V45562-H 101-A100
0.5	UL-Style 1095	YV 1x0.5/1.1 GE	1.1	2.1	2.8	500	cone	V45562-H 104-A100
0.5	UL-Style 1095	YV 1x0.5/1.1 GN	1.1	2.1	2.8	500	cone	V45562-H 105-A100
0.5	UL-Style 1095	YV 1x0.5/1.1 BL	1.1	2.1	2.8	500	cone	V45562-H 106-A100

Single wires with PVC-insulation

Con- ductor	Annotation	Type designation	Outer-Ø	Copper value	Net weight	Delivery length	Packaging	Order-Number
Wire-Ø mm			mm	kg/km	kg/km	m		
0.5	UL-Style 1095	YV 1x0.5/1.1 GR	1.1	2.1	2.8	500	cone	V45562-H 108-A100
0.5	UL-Style 1095	YV 1x0.5/1.1 WS	1.1	2.1	2.8	500	cone	V45562-H 109-A100
0.5	UL-Style 1095	YV 1x0.5/1.1 SW	1.1	2.1	2.8	500	cone	V45562-H 110-A100
0.5	UL-Style 1095	YV 1x0.5/1.1 RS	1.1	2.1	2.8	500	cone	V45562-H 111-A100
0.5	UL-Style 1095	YV 1x0.5/1.1 WSGN	1.1	2.1	2.8	500	cone	V45562-H 121-A100
0.5	UL-Style 1095	YV 1x0.5/1.1 WSGE	1.1	2.1	2.8	500	cone	V45562-H 122-A100
0.5	UL-Style 1095	YV 1x0.5/1.1 WSBL	1.1	2.1	2.8	500	cone	V45562-H 123-A100
0.5	UL-Style 1095	YV 1x0.5/1.1 WSSW	1.1	2.1	2.8	500	cone	V45562-H 124-A100
0.5	UL-Style 1095	YV 1x0.5/1.1 BRGE	1.1	2.1	2.8	500	cone	V45562-H 128-A100
0.5	UL-Style 1095	YV 1x0.5/1.1 BRBL	1.1	2.1	2.8	500	cone	V45562-H 129-A100
0.5	UL-Style 1095	YV 1x0.5/1.1 BRSW	1.1	2.1	2.8	500	cone	V45562-H 130-A100
0.5	UL-Style 1095	YV 1x0.5/1.1 GNRT	1.1	2.1	2.8	500	cone	V45562-H 132-A100
0.5	UL-Style 1095	YV 1x0.5/1.1 GNSW	1.1	2.1	2.8	500	cone	V45562-H 133-A100
0.5	UL-Style 1095	YV 1x0.5/1.1 GERT	1.1	2.1	2.8	500	cone	V45562-H 134-A100
0.5	UL-Style 1095	YV 1x0.5/1.1 GESW	1.1	2.1	2.8	500	cone	V45562-H 136-A100
0.5	UL-Style 1095	YV 1x0.5/1.1 GRRT	1.1	2.1	2.8	500	cone	V45562-H 139-A100
0.6		YV 1x0.6/1.1 BR	1.1	3.0	3.5	250	cone	V45562-J 101-A 20
0.6		YV 1x0.6/1.1 BR	1.1	3.0	3.5	500	cone	V45562-J 101-A 20-A7
0.6		YV 1x0.6/1.1 RT	1.1	3.0	3.5	250	cone	V45562-J 102-A 20
0.6		YV 1x0.6/1.1 RT	1.1	3.0	3.5	500	cone	V45562-J 102-A 20-A7
0.6		YV 1x0.6/1.1 GE	1.1	3.0	3.5	250	cone	V45562-J 104-A 20
0.6		YV 1x0.6/1.1 GE	1.1	3.0	3.5	500	cone	V45562-J 104-A 20-A7
0.6		YV 1x0.6/1.1 GN	1.1	3.0	3.5	250	cone	V45562-J 105-A 20
0.6		YV 1x0.6/1.1 GN	1.1	3.0	3.5	500	cone	V45562-J 105-A 20-A7
0.6		YV 1x0.6/1.1 BL	1.1	3.0	3.5	250	cone	V45562-J 106-A 20
0.6		YV 1x0.6/1.1 BL	1.1	3.0	3.5	500	cone	V45562-J 106-A 20-A7
0.6		YV 1x0.6/1.1 VI	1.1	3.0	3.5	250	cone	V45562-J 107-A 20
0.6		YV 1x0.6/1.1 VI	1.1	3.0	3.5	500	cone	V45562-J 107-A 20-A7
0.6		YV 1x0.6/1.1 GR	1.1	3.0	3.5	250	cone	V45562-J 108-A 20
0.6		YV 1x0.6/1.1 GR	1.1	3.0	3.5	500	cone	V45562-J 108-A 20-A7

Single wires with PVC-insulation

Con- ductor	Annotation	Type designation	Outer-Ø	Copper value	Net weight	Delivery length	Packaging	Order-Number
Wire-Ø mm			mm	kg/km	kg/km	m		
0.6		YV 1x0.6/1.1 WS	1.1	3.0	3.5	250	cone	V45562-J 109-A 20
0.6		YV 1x0.6/1.1 WS	1.1	3.0	3.5	500	cone	V45562-J 109-A 20-A7
0.6		YV 1x0.6/1.1 SW	1.1	3.0	3.5	250	cone	V45562-J 110-A 20
0.6		YV 1x0.6/1.1 SW	1.1	3.0	3.5	500	cone	V45562-J 110-A 20-A7
0.6		YV 1x0.6/1.1 WSSW	1.1	3.0	3.6	250	cone	V45562-J 124-A 20
0.6		YV 1x0.6/1.1 WSRT	1.1	3.0	3.6	250	cone	V45562-J 125-A 20
0.6		YV 1x0.6/1.1 WSRT	1.1	3.0	3.6	500	cone	V45562-J 125-A 20-A7
0.6		YV 1x0.6/1.1 GESW	1.1	3.0	3.6	250	cone	V45562-J 136-A 10
0.6		YV 1x0.6/1.1 GNBR	1.1	3.0	3.6	250	cone	V45562-J 199-A
0.8	VDE 0812	YV 1x0.8/1.4 BR	1.4	5.2	6.0	500	cone	H50402-A 814-A 1
0.8	VDE 0812	YV 1x0.8/1.4 VZN BR	1.4	5.2	6.0	250	cone	H50402-A 814-A 1-96
0.8	VDE 0812	YV 1x0.8/1.4 RT	1.4	5.2	6.0	500	cone	H50402-A 814-A 2
0.8	VDE 0812	YV 1x0.8/1.4 VZN RT	1.4	5.2	6.0	250	cone	H50402-A 814-A 2-96
0.8	VDE 0812	YV 1x0.8/1.4 GE	1.4	5.2	6.0	500	cone	H50402-A 814-A 4
0.8	VDE 0812	YV 1x0.8/1.4 VZN GE	1.4	5.2	6.0	250	cone	H50402-A 814-A 4-96
0.8	VDE 0812	YV 1x0.8/1.4 GN	1.4	5.2	6.0	500	cone	H50402-A 814-A 5
0.8	VDE 0812	YV 1x0.8/1.4 VZN GN	1.4	5.2	6.0	250	cone	H50402-A 814-A 5-96
0.8	VDE 0812	YV 1x0.8/1.4 BL	1.4	5.2	6.0	500	cone	H50402-A 814-A 6
0.8	VDE 0812	YV 1x0.8/1.4 VZN BL	1.4	5.2	6.0	250	cone	H50402-A 814-A 6-96
0.8	VDE 0812	YV 1x0.8/1.4 VI	1.4	5.2	6.0	500	cone	H50402-A 814-A 7
0.8	VDE 0812	YV 1x0.8/1.4 GR	1.4	5.2	6.0	500	cone	H50402-A 814-A 8
0.8	VDE 0812	YV 1x0.8/1.4 VZN GR	1.4	5.2	6.0	250	cone	H50402-A 814-A 8-96
0.8	VDE 0812	YV 1x0.8/1.4 WS	1.4	5.2	6.0	500	cone	H50402-A 814-A 9
0.8	VDE 0812	YV 1x0.8/1.4 VZN WS	1.4	5.2	6.0	250	cone	H50402-A 814-A 9-96
0.8	VDE 0812	YV 1x0.8/1.4 SW	1.4	5.2	6.0	500	cone	H50402-A 814-A 10
0.8	VDE 0812	YV 1x0.8/1.4 VZN SW	1.4	5.2	6.0	250	cone	H50402-A 814-A 10-96
0.8	VDE 0812	YV 1x0.8/1.4 RS	1.4	5.2	6.0	500	cone	H50402-A 814-A 11
0.8	VDE 0812	YV 1x0.8/1.4 VZN RS	1.4	5.2	6.0	250	cone	H50402-A 814-A 11-96
0.8	VDE 0812	YV 1x0.8/1.4 GE BR	1.4	5.2	6.0	500	cone	H50402-A 814-A 28
0.8	VDE 0812	YV 1x0.8/1.4 GN GE	1.4	5.2	6.0	500	cone	H50402-A 814-A 31

Single wires with PVC-insulation

Con- ductor	Annotation	Type designation	Outer-Ø	Copper value	Net weight	Delivery length	Packaging	Order-Number
Wire-Ø mm			mm	kg/km	kg/km	m		
0.8	VDE 0812	YV 1x0.8/1.4 GESW	1.4	5.2	6.0	500	cone	H50402-A 814-A 36
1.0	VDE 0812	YV 1x1.0/1.8 BR	1.8	8.2	9.8	250	cone	H50402-A1018-A 1
1.0	VDE 0812	YV 1x1.0/1.8 RT	1.8	8.2	9.8	250	cone	H50402-A1018-A 2
1.0	VDE 0812	YV 1x1.0/1.8 GE	1.8	8.2	9.8	250	cone	H50402-A1018-A 4
1.0	VDE 0812	YV 1x1.0/1.8 GN	1.8	8.2	9.8	250	cone	H50402-A1018-A 5
1.0	VDE 0812	YV 1x1.0/1.8 BL	1.8	8.2	9.8	250	cone	H50402-A1018-A 6
1.0	VDE 0812	YV 1x1.0/1.8 VI	1.8	8.2	9.8	250	cone	H50402-A1018-A 7
1.0	VDE 0812	YV 1x1.0/1.8 GR	1.8	8.2	9.8	250	cone	H50402-A1018-A 8
1.0	VDE 0812	YV 1x1.0/1.8 WS	1.8	8.2	9.8	250	cone	H50402-A1018-A 9
1.0	VDE 0812	YV 1x1.0/1.8 SW	1.8	8.2	9.8	250	cone	H50402-A1018-A 10
1.0	VDE 0812	YV 1x1.0/1.8 RS	1.8	8.2	9.8	250	cone	H50402-A1018-A 11
1.0	VDE 0812	YV 1x1.0/1.8 GE/GN	1.8	8.2	9.8	250	cone	H50402-A1018-A 31
1.0	VDE 0812	YV 1x1.0/1.8 GESW	1.8	8.2	9.8	250	cone	H50402-A1018-A 36
1.4	VDE 0812	YV 1x1.4/2.2 RT	2.2	15.8	17.4	250	cone	H50402-A1422-A 2
1.4	VDE 0812	YV 1x1.4/2.2 BL	2.2	15.8	17.4	250	cone	H50402-A1422-A 6
1.8	VDE 0812	YV 1x1.8/2.8 SW	2.8	26.0	28.3	150	cone	H50402-A1828-A 10

Twisted wires with PVC-insulation

PVC-insulated wire

VDE 0812

Type: YV 2x0.5/0.9 WS/BR

Order-No.: H50402-B 509-A 43



Application

These cables are commonly used for electronic, information processing and telecommunications applications to connect fixed devices or installations.

Construction

Round copper wires, bare or tinned
Insulation of PVC

Constructions are available complying with

- DIN VDE, MIL, BS, EN, IEC
- UL and CSA

Technical characteristics

vary according to the relevant specification

Core identification

colour coding,
ring marking or number printing

Operating voltage

up to 3000 V

Test voltage

up to 4000 V

Temperature range

for standard applications
– 5 °C up to 70 °C

for advanced requirements
– 20 °C up to 80 °C (105 °C)

Con-ductor	Annotation	Type designation	Outer-Ø	Copper value	Net weight	Delivery length	Packaging	Order-Number
Wire-Ø mm			mm	kg/km	kg/km	m		
2 x 0.5	VDE 0812	YV 2x0.5/0.9 WS/BR	1.8	4.2	4.9	500	cone	H50402-B 509-A 43
2 x 0.5	VDE 0812	YV 2x0.5/0.9 WS/BR	1.8	4.2	4.9	250	cone	H50402-B 509-A 43-96
2 x 0.5	VDE 0812	YV 2x0.5/0.9 WS/GN	1.8	4.2	4.9	500	cone	H50402-B 509-A 44
2 x 0.5	VDE 0812	YV 2x0.5/0.9 WS/GE	1.8	4.2	4.9	500	cone	H50402-B 509-A 45
2 x 0.5	VDE 0812	YV 2x0.5/0.9 WS/BL	1.8	4.2	4.9	250	cone	H50402-B 509-A 46-96
2 x 0.5	VDE 0812	YV 2x0.5/0.9 WS/RT	1.8	4.2	4.9	500	cone	H50402-B 509-A 47
2 x 0.5	VDE 0812	YV 2x0.5/0.9 WS/SW	1.8	4.2	4.9	500	cone	H50402-B 509-A 48
2 x 0.5	VDE 0812	YV 2x0.5/0.9 WS/SW	1.8	4.2	4.9	250	cone	H50402-B 509-A 48-96
2 x 0.5	VDE 0812	YV 2x0.5/0.9 BR/GE	1.8	4.2	4.9	500	cone	H50402-B 509-A 49
2 x 0.5	VDE 0812	YV 2x0.5/0.9 GN/GE	1.8	4.2	4.9	500	cone	H50402-B 509-A 50
2 x 0.5	VDE 0812	YV 2x0.5/0.9 RT/SW	1.8	4.2	4.9	500	cone	H50402-B 509-A 52
2 x 0.5	VDE 0812	YV 2x0.5/0.9 RT/SW	1.8	4.2	4.9	250	cone	H50402-B 509-A 52-96
2 x 0.5	VDE 0812	YV 2x0.5/0.9 WSGN/BRGN	1.8	4.2	4.9	500	cone	H50402-B 509-A 53
2 x 0.5	VDE 0812	YV 2x0.5/0.9 WSGN/BRGN	1.8	4.2	4.9	250	cone	H50402-B 509-A 53-96
2 x 0.5	VDE 0812	YV 2x0.5/0.9 WSGE/GEBR	1.8	4.2	4.9	500	cone	H50402-B 509-A 54
2 x 0.5	VDE 0812	YV 2x0.5/0.9 WSGE/GEBR	1.8	4.2	4.9	250	cone	H50402-B 509-A 54-96
2 x 0.5	VDE 0812	YV 2x0.5/0.9 WSBL/BRBL	1.8	4.2	4.9	500	cone	H50402-B 509-A 55
2 x 0.5	VDE 0812	YV 2x0.5/0.9 WSBL/BRBL	1.8	4.2	4.9	250	cone	H50402-B 509-A 55-96
2 x 0.5	VDE 0812	YV 2x0.5/0.9 WSSW/BRSW	1.8	4.2	4.9	500	cone	H50402-B 509-A 56
2 x 0.5	VDE 0812	YV 2x0.5/1.1 WS/BR	2.2	4.2	5.7	500	cone	H50402-B 511-A 43
2 x 0.5	VDE 0812	YV 2x0.5/1.1 SW/WS	2.2	4.2	5.7	500	cone	H50402-B 511-A 48
2 x 0.5	VDE 0812	YV 2x0.5/1.1 GN/GE	2.2	4.2	5.7	500	cone	H50402-B 511-A 50
2 x 0.5	VDE 0812	YV 2x0.5/1.1 RT/SW	2.2	4.2	5.7	500	cone	H50402-B 511-A 52
2 x 0.5	VDE 0812	YV 2x0.5/1.1 BL/RT	2.2	4.2	5.7	500	cone	H50402-B 511-A 68
2 x 0.6		YV 2x0.6/1.1 WS/BR	2.2	6.0	7.1	250	cone	V45562-J 243-A 20
2 x 0.6		YV 2x0.6/1.1 WS/GN	2.2	6.0	7.1	250	cone	V45562-J 244-A 20
2 x 0.6		YV 2x0.6/1.1 WS/GE	2.2	6.0	7.1	250	cone	V45562-J 245-A 20
2 x 0.6		YV 2x0.6/1.1 WS/BL	2.2	6.0	7.1	250	cone	V45562-J 246-A 20
2 x 0.6		YV 2x0.6/1.1 WS/RT	2.2	6.0	7.1	250	cone	V45562-J 247-A 20
2 x 0.6		YV 2x0.6/1.1 WS/SW	2.2	6.0	7.1	500	cone	V45562-J 248-A 20
2 x 0.6		YV 2x0.6/1.1 GN/GE	2.2	6.0	7.1	250	cone	V45562-J 250-A 20
2 x 0.6		YV 2x0.6/1.1 GN/SW	2.2	6.0	7.1	250	cone	V45562-J 251-A 20
2 x 0.6		YV 2x0.6/1.1 RT/SW	2.2	6.0	7.1	250	cone	V45562-J 252-A 20
2 x 0.6		YV 2x0.6/1.1 BL/RT	2.2	6.0	7.1	250	cone	V45562-J 268-A 20
3 x 0.6		YV 3x0.6/1.1 WS/SW/GN	2.4	9.0	10.6	250	cone	V45562-J 357-A 20
4 x 0.6		YV 4x0.6/1.1 WS/GE/SW/GN	2.7	12.1	14.4	100	cone	V45562-J 459-A 20
4 x 0.6		YV 4x0.6/1.1 WS/GE/SW/GN	2.7	12.1	14.4	250	cone	V45562-J 459-A 20-96
5 x 0.6		YV 5x0.6/1.1 WS/GE/SW/GN/GR	3.0	15.1	17.8	100	cone	V45562-J 562-A 10
2 x 0.8	VDE 0812	YV 2x0.8/1.4 WS/BR	2.8	10.5	12.0	200	cone	H50402-B 814-A 43
2 x 0.8	VDE 0812	YV 2x0.8/1.4 WSGN	2.8	10.5	12.0	200	cone	H50402-B 814-A 44
2 x 0.8	VDE 0812	YV 2x0.8/1.4 WSGE	2.8	10.5	12.0	200	cone	H50402-B 814-A 45
2 x 0.8	VDE 0812	YV 2x0.8/1.4 WSBL	2.8	10.5	12.0	200	cone	H50402-B 814-A 46
2 x 0.8	VDE 0812	YV 2x0.8/1.4 WSRT	2.8	10.5	12.0	200	cone	H50402-B 814-A 47
2 x 0.8	VDE 0812	YV 2x0.8/1.4 WSSW	2.8	10.5	12.0	200	cone	H50402-B 814-A 48
2 x 0.8	VDE 0812	YV 2x0.8/1.4 RTSW	2.8	10.5	12.0	200	cone	H50402-B 814-A 52
2 x 0.8	VDE 0812	YV 2x0.8/1.4 BLRT	2.8	10.5	12.0	200	cone	H50402-B 814-A 68

Twisted wires with PVC-insulation and shielding

PVC-insulated shielded wire

VDE 0812

Type: YVO(ST)Y 2x0.5/0.9
WSBL/BRBL

Order-No.: H50402-B 509-D 55



Application

These cables are commonly used for electronic, information processing and telecommunications applications to connect fixed devices or installations. Shielded wires are used to protect data transmission against electric emissions.

Construction

Conductors of bare or tinned copper wires, screening of aluminium foil or aluminium-laminated plastic foil each with drain wire, also available with copper braid shielding round or flat design, outer sheath of PVC

Constructions are available complying with

- DIN VDE, MIL, BS, EN, IEC
- UL and CSA

Technical characteristics

vary according to the relevant specification

Core identification

Colour coding

Operating voltage

up to 1500 V

Test voltage

up to 300 V

Temperature range

for standard applications
– 5 °C up to 70 °C
for advanced applications
– 20 °C up to 80 °C (105 °C)

Con- ductor	Annotation	Type designation	Outer-Ø	Copper value	Net weight	Delivery length	Packaging	Order-Number
Wire-Ø mm			mm	kg/km	kg/km	m		
0.5	VDE 0812	YV(ST)Y 1x0.5/1.1 BR	2.2	4.1	8.2	250	cone	H50402-A 511-C 1
0.5	VDE 0812	YV(ST)Y 1x0.5/1.1 GR	2.2	4.1	8.2	250	cone	H50402-A 511-C 8
2 x 0.8	VDE 0812	YV(ST)Y 2x0.8/1.4 WS/BR	4.0	12.5	23.2	100	ring	H50402-B 814-C 43
2 x 0.8	VDE 0812	YV (ST) Y 2x0.8/1.4 RT/SW	4.0	12.5	23.2	100	ring	H50402-B 814-C 52
2 x 0.8	VDE 0812	YV(ST)Y 2x0.8/1.4 BL/SW	4.0	12.5	23.2	100	ring	H50402-B 814-C 64
2 x 0.8	VDE 0812	YV(ST)Y 2x0.8/1.4 BL/RT	4.0	12.5	23.2	100	ring	H50402-B 814-C 68
2 x 0.5	VDE 0812	YVO(ST)Y 2x0.5/0.9 WS/BR	2.6	6.3	10.5	250	cone	H50402-B 509-D 43
2 x 0.5	VDE 0812	YVO(ST)Y 2x0.5/0.9 WSGN/BRGN	2.6	5.9	10.6	250	cone	H50402-B 509-D 53
2 x 0.5	VDE 0812	YVO(ST)Y 2x0.5/0.9 WSGE/BRGE	2.6	5.9	10.6	250	cone	H50402-B 509-D 54
2 x 0.5	VDE 0812	YVO(ST)Y 2x0.5/0.9 WSBL/BRBL	2.6	5.9	10.6	250	cone	H50402-B 509-D 55

Wires with ETFE-insulation

ETFE-insulated wire

VDE 0881, UL-Style 1517, CSA

Type: 7Y 2x0.25/0.55 VS GE/SW

Order-No.: V45562-D 265-H



Application

These cables are commonly used for electronic, information processing and telecommunications applications to connect fixed devices or installations. ETFE-insulated wires are used when advanced electrical characteristics are required or for applications which are exposed to thermal or mechanical stress. The ETFE-insulation is also suitable for wire wrap connections according to DIN IEC 352-1.

Construction

Round wires made of copper or copper alloy according to the application the wire is of bare, tinned, silver-plated or nickelized copper. Insulation of ETFE.

Constructions are available complying with

- DIN VDE, MIL, BS, EN, IEC
- UL and CSA

Technical characteristics

vary according to the relevant specification

Core identification

Colour coding, ring marking

Operating voltage

up to 1500 V

Test voltage

up to 2500 V

Temperature range

– 90 °C up to 135 °C (150 °C)

Temperature range for

bare copper wire:

up to 135 °C

tinned copper wire:

up to 125 °C

Remark

Products with stranded and/or shielded cores are also available

Con- ductor	Annotation	Type designation	Outer-Ø	Copper value	Net weight	Delivery length	Packaging	Order-Number
Wire-Ø mm			mm	kg/km	kg/km	m		
0.25	VDE 0881, UL-Style 1517, CSA	7Y 1x0.25/0.55 VS RT	0.6	0.5	0.8	6500	coil	V45562-D 102-H
0.25	VDE 0881, UL-Style 1517, CSA	7Y 1x0.25/0.55 VS OR	0.6	0.5	0.8	6500	coil	V45562-D 103-H
0.25	VDE 0881, UL-Style 1517, CSA	7Y 1x0.25/0.55 VS GE	0.6	0.5	0.8	6500	coil	V45562-D 104-H
0.25	VDE 0881, UL-Style 1517, CSA	7Y 1x0.25/0.55 VS GN	0.6	0.5	0.8	6500	coil	V45562-D 105-H
0.25	VDE 0881, UL-Style 1517, CSA	7Y 1x0.25/0.55 VS GR	0.6	0.5	0.8	6500	coil	V45562-D 108-H
0.25	VDE 0881, UL-Style 1517, CSA	7Y 1x0.25/0.55 VS WS	0.6	0.5	0.8	6500	coil	V45562-D 109-H
0.25	VDE 0881, UL-Style 1517, CSA	7Y 1x0.25/0.55 VS LH GN	0.6	0.5	0.8	6500	coil	V45562-D 105-H 20
0.25	VDE 0881, UL-Style 1517, CSA	7Y 2x0.25/0.55 VS GE/SW	1.1	1.0	1.6	1700	coil	V45562-D 265-H
0.32	UL-Style 1517, CSA	7Y 1x0.32/0.7 VS WSGN	0.7	0.8	1.3	4200	coil	V45562-E 121-H
0.32	UL-Style 1517, CSA	7Y 1x0.32/0.7 VS BRGN	0.7	0.8	1.3	4200	coil	V45562-E 127-H
0.32	UL-Style 1517, CSA	7Y 1x0.32/0.7 VS GEBR	0.7	0.8	1.3	4200	coil	V45562-E 128-H
0.4	VDE 0881, UL-Style 1517, CSA	7Y 1x0.4/0.9 VS RT	0.9	1.3	2.0	2500	coil	V45562-G 102-H
0.4	VDE 0881, UL-Style 1517, CSA	7Y 1x0.4/0.9 VS GN	0.9	1.3	2.0	2500	coil	V45562-G 105-H
0.4	VDE 0881, UL-Style 1517, CSA	7Y 1x0.4/0.9 VS BL	0.9	1.3	2.0	2500	coil	V45562-G 106-H
0.4	VDE 0881, UL-Style 1517, CSA	7Y 1x0.4/0.9 VS GR	0.9	1.3	2.0	2500	coil	V45562-G 108-H
0.4	VDE 0881, UL-Style 1517, CSA	7Y 1x0.4/0.9 VS WS	0.9	1.3	2.0	2500	coil	V45562-G 109-H
0.4	VDE 0881, UL-Style 1517, CSA	7Y 1x0.4/0.9 VS LH RT	0.9	1.3	2.0	2500	coil	V45562-G 102-H 10
0.4	VDE 0881, UL-Style 1517, CSA	7Y 1x0.4/0.9 VS LH GN	0.9	1.3	2.0	2500	coil	V45562-G 105-H 10
0.5	VDE 0881, UL-Style 1517, CSA	7Y 1x0.5/1.0 BR	1.0	2.0	2.8	2000	coil	V45562-H 101-H
0.5	VDE 0881, UL-Style 1517, CSA	7Y 1x0.5/1.0 VS	1.0	2.0	2.8	2000	coil	V45562-H 102-H
0.5	VDE 0881, UL-Style 1517, CSA	7Y 1x0.5/1.0 GE	1.0	2.0	2.8	2000	coil	V45562-H 104-H
0.5	VDE 0881, UL-Style 1517, CSA	7Y 1x0.5/1.0 GN	1.0	2.0	2.8	2000	coil	V45562-H 105-H
0.5	VDE 0881, UL-Style 1517, CSA	7Y 1x0.5/1.0 BL	1.0	2.0	2.8	2000	coil	V45562-H 106-H
0.5	VDE 0881, UL-Style 1517, CSA	7Y 1x0.5/1.0 VS GR	1.0	2.0	2.8	2000	coil	V45562-H 108-H
0.5	VDE 0881, UL-Style 1517, CSA	7Y 1x0.5/1.0 SW	1.0	2.0	2.8	2000	coil	V45562-H 110-H
0.5	VDE 0881, UL-Style 1517, CSA	7Y 1x0.5/1.0 VS LH GN	1.0	2.0	2.8	2000	coil	V45562-H 105-H 10
0.5	VDE 0881, UL-Style 1517, CSA	7Y 1x0.5/1.0 VS LH SW	1.0	2.0	2.8	2000	coil	V45562-H 110-H 20
0.5	VDE 0881, UL-Style 1517, CSA	7Y 1x0.5/1.0 LH SW	1.0	2.0	2.8	2000	coil	V45562-H 110-H120
0.8	VDE 0881, UL-Style 1517, CSA	7Y 1x0.8/1.3 VS RT	1.3	5.1	6.0	1200	coil	V45562-L 102-H 10
0.8	VDE 0881, UL-Style 1517, CSA	7Y 1x0.8/1.3 VZN GE	1.3	5.1	6.0	1200	coil	V45562-L 104-H110

Insulated wires for special applications

Special construction with FEP-insulation

UL-Style 1332

Type: 6Y 0.65/1.6 BR

Order-No.: L45562-J 101-G



For specific requirements we develop customised cables with different insulation materials.

Constructions are available complying with

- DIN VDE, MIL, BS, EN, IEC
- UL and CSA

Characteristics of different insulation materials:

- PE: very good electrical characteristics
temperature range – 50°C up to 70°C
- PA: good resistance to mechanical stress
temperature range – 30°C up to 105°C
- PETP: good tear resistance even with minimal wall thickness
temperature range – 20°C up to 100°C
- Silicon: halogen-free,
very high temperature resistance,
very flexible
temperature range – 50°C up to 180°C
- PVDF: good tear resistance,
very good resistance to chemicals
temperature range – 40°C up to 135°C
- PEEK: halogen-free,
radiation resistant,
high temperature resistance
temperature range – 50°C up to 220°C
- FEP: high temperature resistance,
good tear resistance,
good resistance to chemicals
temperature range – 90°C up to 200°C
- PFA: high temperature resistance,
good tear resistance,
good resistance to chemicals
temperature range – 90°C up to 260°C

Con- ductor	Annotation	Type designation	Outer-Ø	Copper value	Net weight	Delivery length	Packaging	Order-Number
Wire-Ø mm			mm	kg/km	kg/km	m		
0.65	UL-Style 1332	6Y 0.65/1.6 BR	1.6	3.3	6.6	3000	coil	L45562-J 101-G
0.65	UL-Style 1332	6Y 0.65/1.6 OR	1.6	3.3	6.6	3000	coil	L45562-J 103-G
0.65	UL-Style 1332	6Y 0.65/1.6 GN	1.6	3.3	6.6	3000	coil	L45562-J 105-G
0.65	UL-Style 1332	6Y 0.65/1.6 BL	1.6	3.3	6.6	3000	coil	L45562-J 106-G
0.65	UL-Style 1332	6Y 0.65/1.6 WS	1.6	3.3	6.6	3000	coil	L45562-J 109-G

Single stranded wires with PVC-insulation

PVC-insulated stranded wire
VDE 0812, UL-Style 1007
Type: LIY 1x1.0/2.1 VZN BL
Order-No.: V45571-E 106-A



Application

These cables are commonly used for electronic, information processing and telecommunications applications to connect devices or installations which are exposed to moderate stress.

Construction

Strand made of wires, bare or tinned copper
 Insulation of PVC

Constructions are available complying with

- DIN VDE, MIL, BS, EN, IEC
- UL and CSA

Technical characteristics

vary according to the relevant specification

Core identification

Colour coding,
 ring marking or number printing

Operating voltage

up to 3000 V

Test voltage

up to 4000 V

Temperature range

for standard applications:
 – 5 °C up to 70 °C
 for advanced requirements
 – 20 °C up to 80 °C (105 °C)

Conductor	Annotation	Type designation	Outer-Ø	Copper value	Net weight	Delivery length	Packaging	Order-Number
Strand mm ²			mm	kg/km	kg/km	m		
0.09		LIY 0.09/0.7 BR	0.7	1.0	1.2	1500	cone	V45571-K 101-A
0.09		LIY 0.09/0.7 BL	0.7	1.0	1.2	1500	cone	V45571-K 106-A
0.09		LIY 1x0.09/0.7 VZN	0.7	1.0	1.2	1500	cone	V45571-K 106-A 20
0.09		LIY 0.09/0.7 WS	0.7	1.0	1.2	1500	cone	V45571-K 109-A
0.09		LIY 0.09/0.7 SW	0.7	1.0	1.2	1500	cone	V45571-K 110-A
0.14		LIY 1x0.14/1.0 GE	1.0	1.5	2.1	1000	cone	V45571-A 104-A 40
0.14		LIY 1x0.14/1.0 BL	1.0	1.5	2.1	1000	cone	V45571-A 106-A 30
0.14		LIY 1x0.14/1.0 SW	1.0	1.5	2.1	1000	cone	V45571-A 110-A 30
0.14		LIY 1x0.14/1.0 SW	1.0	1.5	2.1	1000	coil	V45571-A 110-A 30-L7
0.14		LIY 1x0.14/1.0 SW	1.0	1.5	2.1	2000	coil	V45571-A 110-A 30-L8
0.14	UL-Style 1729	LIY 1x0.14/1.0 VZN GR	1.0	1.5	2.1	3000	coil	V45571-A 108-A 90
0.14	UL-Style 1674	LIY 1x0.14/1.1 VZN RT	1.1	1.5	2.4	6000	coil	V45571-A 102-A 40-M2
0.14	UL-Style 1674	LIY 1x0.14/1.1 VZN BL	1.1	1.5	2.4	1000	cone	V45571-A 106-A 40
0.14	UL-Style 1674	LIY 1x0.14/1.1 VZN GR	1.1	1.5	2.4	1000	cone	V45571-A 108-A 40
0.14	UL-Style 1674	LIY 1x0.14/1.1 VZN GR	1.1	1.5	2.4	3000	coil	V45571-A 108-A 40-M1
0.14	UL-Style 1674	LIY 1x0.14/1.1 VZN WS	1.1	1.5	2.4	6000	coil	V45571-A 109-A 60-M2
0.14	UL-Style 1674	LIY 1x0.14/1.1 VZN SW	1.1	1.5	2.4	3000	coil	V45571-A 110-A 40-M1
0.14	UL-Style 1007, CSA	LIY 1x0.14/1.5 VZN RT	1.4	1.4	3.1	1500	coil	V45571-A 102-A 70
0.14	UL-Style 1007, CSA	LIY 1x0.14/1.5 VZN BL	1.4	1.4	3.1	1500	coil	V45571-A 106-A 60
0.22	UL-Style 1007, CSA	LIY 1x0.22/1.6 VZN BR	1.5	2.2	4.1	1500	coil	V45571-B 101-A 20
0.22	UL-Style 1007, CSA	LIY 1x0.22/1.6 VZN RT	1.5	2.2	4.1	1500	coil	V45571-B 102-A 40
0.22	UL-Style 1007, CSA	LIY 1x0.22/1.6 VZN GE	1.5	2.2	4.1	1500	coil	V45571-B 104-A 30
0.22	UL-Style 1007, CSA	LIY 1x0.22/1.6 VZN BL	1.5	2.2	4.1	1500	coil	V45571-B 106-A 30
0.22	UL-Style 1007, CSA	LIY 1x0.22/1.6 VZN GR	1.5	2.2	4.1	1500	coil	V45571-B 108-A 30
0.22	UL-Style 1007, CSA	LIY 1x0.22/1.6 VZN WS	1.5	2.2	4.1	1500	coil	V45571-B 109-A 20
0.22	UL-Style 1007, CSA	LIY 1x0.22/1.6 VZN SW	1.5	2.2	4.1	1500	coil	V45571-B 110-A 40
0.22	VDE 0881, UL-Style 1007, CSA	LIY 1x0.22/1.4 VZN BR	1.4	2.2	3.9	500	cone	V45571-B 101-A100
0.22	VDE 0881, UL-Style 1007, CSA	LIY 1x0.22/1.4 VZN RT	1.4	2.2	3.9	500	cone	V45571-B 102-A100
0.22	VDE 0881, UL-Style 1007, CSA	LIY 1x0.22/1.4 VZN GE	1.4	2.2	3.9	500	cone	V45571-B 104-A100

Single stranded wires with PVC-insulation

Conductor	Annotation	Type designation	Outer-Ø	Copper value	Net weight	Delivery length	Packaging	Order-Number
Strand mm ²			mm	kg/km	kg/km	m		
0.22	VDE 0881, UL-Style 1007, CSA	LIY 1x0.22/1.4 VZN GN	1.4	2.2	3.9	3000	coil	V45571-B 105-A100-M
0.22	VDE 0881, UL-Style 1007, CSA	LIY 1x0.22/1.4 VZN BL	1.4	2.2	3.9	3000	coil	V45571-B 106-A100-M1
0.22	VDE 0881, UL-Style 1007, CSA	LIY 1x0.22/1.4 VZN WS	1.4	2.2	3.9	500	cone	V45571-B 109-A100
0.22	VDE 0881, UL-Style 1007, CSA	LIY 1x0.22/1.4 VZN WS	1.4	2.2	3.9	3000	coil	V45571-B 109-A100-M1
0.22	VDE 0881, UL-Style 1007, CSA	LIY 1x0.22/1.4 VZN SW	1.4	2.2	3.9	500	cone	V45571-B 110-A100
0.22	VDE 0881, UL-Style 1007, CSA	LIY 1x0.22/1.4 VZN SW	1.4	2.2	3.9	3000	coil	V45571-B 110-A100-M1
0.25	VDE 0812	LIY 0.25/1.3 VZN BR	1.3	2.6	3.7	250	cone	V45571-B 101-A
0.25	VDE 0812	LIY 0.25/1.3 VZN RT	1.3	2.6	3.7	250	cone	V45571-B 102-A
0.25	VDE 0812	LIY 0.25/1.3 VZN GE	1.3	2.6	3.7	250	cone	V45571-B 104-A
0.25	VDE 0812	LIY 0.25/1.3 VZN GN	1.3	2.6	3.7	250	cone	V45571-B 105-A
0.25	VDE 0812	LIY 0.25/1.3 VZN BL	1.3	2.6	3.7	250	cone	V45571-B 106-A
0.25	VDE 0812	LIY 0.25/1.3 VZN GR	1.3	2.6	3.7	250	cone	V45571-B 108-A
0.25	VDE 0812	LIY 0.25/1.3 VZN WS	1.3	2.6	3.7	250	cone	V45571-B 109-A
0.25	VDE 0812	LIY 0.25/1.3 VZN SW	1.3	2.6	3.7	250	cone	V45571-B 110-A
0.25	VDE 0812	LIY 0.25/1.3 VZN RS	1.3	2.6	3.7	250	cone	V45571-B 111-A
0.25	UL-Style 1674	LIY 1x0.25/1.3 VZN RT	1.3	2.6	3.7	1000	cone	V45571-B 102-A 50
0.25	UL-Style 1674	LIY 1x0.25/1.3 VZN BL	1.3	2.6	3.7	1000	cone	V45571-B 106-A 40
0.25	UL-Style 1674	LIY 1x0.25/1.3 VZN SW	1.3	2.6	3.7	1000	cone	V45571-B 110-A 50
0.34	UL-Style 1095, CSA	LIY 1x0.34/1.5 VZN SW	1.5	3.4	4.9	500	cone	V45571-P 110-A140
0.35	UL-Style 1007	LIY 1x0.35/1.7 SW	1.7	3.5	5.8	500	coil	V45571-P 110-A130
0.5		LIY 1x0.5/1.6 VZN BR	1.5	5.0	6.0	500	cone	V45571-C 101-A 30
0.5		LIY 1x0.5/1.6 VZN BR	1.5	5.0	6.0	250	cone	V45571-C 101-A 30-96
0.5		LIY 1x0.5/1.6 VZN RT	1.5	5.0	6.0	500	cone	V45571-C 102-A 30
0.5		LIY 1x0.5/1.6 VZN OR	1.5	5.0	6.0	500	cone	V45571-C 103-A 10
0.5		LIY 1x0.5/1.6 VZN GE	1.5	5.0	6.0	500	cone	V45571-C 104-A 30
0.5		LIY 1x0.5/1.6 VZN GN	1.5	5.0	6.0	500	cone	V45571-C 105-A 30

Single stranded wires with PVC-insulation

Con- ductor	Annotation	Type designation	Outer-Ø	Copper value	Net weight	Delivery length	Packaging	Order-Number
Strand mm ²			mm	kg/km	kg/km	m		
0.5		LIY 1x0.5/1.6 VZN BL	1.5	4.9	6.0	500	cone	V45571-C 106-A 30
0.5		LIY 1x0.5/1.6 VZN GR	1.5	4.9	6.0	500	cone	V45571-C 108-A 30
0.5		LIY 1x0.5/1.6 VZN WS	1.5	4.9	6.0	500	cone	V45571-C 109-A 30
0.5		LIY 1x0.5/1.6 VZN SW	1.5	4.9	6.0	500	cone	V45571-C 110-A 30
0.5		LIY 1x0.5/1.6 VZN SW	1.5	4.9	6.0	1000	coil	V45571-C 110-A 30-L7
0.5		LIY 1x0.5/1.6 VZN RS	1.5	4.9	6.0	500	cone	V45571-C 111-A 10
0.5		LIY 1x0.5/1.6 VZN	1.5	4.9	8.0	500	cone	V45571-C 123-A
0.5		LIY 0.5/1.8 BR	1.8	5.4	7.3	250	cone	V45571-C 101-A140
0.5		LIY 0.5/1.8 RT	1.8	5.4	7.3	250	cone	V45571-C 102-A140
0.5		LIY 0.5/1.8 OR	1.8	5.4	7.3	250	cone	V45571-C 103-A140
0.5		LIY 0.5/1.8 GE	1.8	5.4	7.3	250	cone	V45571-C 104-A140
0.5		LIY 0.5/1.8 GN	1.8	5.4	7.3	250	cone	V45571-C 105-A140
0.5		LIY 0.5/1.8 BL	1.8	5.4	7.3	250	cone	V45571-C 106-A140
0.5		LIY 0.5/1.8 GR	1.8	5.4	7.3	250	cone	V45571-C 108-A140
0.5		LIY 0.5/1.8 WS	1.8	5.4	7.3	250	cone	V45571-C 109-A140
0.5		LIY 0.5/1.8 SW	1.8	5.4	7.3	250	cone	V45571-C 110-A140
0.5		LIY 0.5/1.8 GNGE	1.8	5.4	7.3	250	cone	V45571-C 131-A140
0.5	VDE 0812	LIY 0.5/1.8 VZN BR	1.8	5.0	7.0	250	cone	V45571-C 101-A
0.5	VDE 0812	LIY 0.5/1.8 VZN RT	1.8	5.0	7.0	250	cone	V45571-C 102-A
0.5	VDE 0812	LIY 0.5/1.8 VZN GE	1.8	5.0	7.0	250	cone	V45571-C 104-A
0.5	VDE 0812	LIY 0.5/1.8 VZN GN	1.8	5.0	7.0	250	cone	V45571-C 105-A
0.5	VDE 0812	LIY 0.5/1.8 VZN BL	1.8	5.0	7.0	250	cone	V45571-C 106-A
0.5	VDE 0812	LIY 0.5/1.8 VZN GR	1.8	5.0	7.0	250	cone	V45571-C 108-A
0.5	VDE 0812	LIY 0.5/1.8 VZN GR	1.8	5.0	7.0	1000	coil	V45571-C 108-A-L7
0.5	VDE 0812	LIY 0.5/1.8 VZN WS	1.8	5.0	7.0	250	cone	V45571-C 109-A
0.5	VDE 0812	LIY 0.5/1.8 VZN SW	1.8	5.0	7.0	250	cone	V45571-C 110-A
0.5	UL-Style 1674	LIY 1x0.5/1.8 VZN GN	1.8	5.1	7.2	2000	coil	V45571-C 105-A 50-L8
0.5	UL-Style 1674	LIY 1x0.5/1.8 VZN BL	1.8	5.1	7.2	250	cone	V45571-C 106-A 50
0.5	UL-Style 1674	LIY 1x0.5/1.8 VZN GR	1.8	5.1	7.2	250	cone	V45571-C 108-A 50
0.5	UL-Style 1674	LIY 1x0.5/1.8 VZN GR	1.8	5.1	7.2	2000	coil	V45571-C 108-A 50-L8
0.5	UL-Style 1674	LIY 1x0.5/1.8 VZN WS	1.8	5.1	7.2	250	cone	V45571-C 109-A 60
0.5	UL-Style 1674	LIY 1x0.5/1.8 VZN SW	1.8	5.1	7.2	250	cone	V45571-C 110-A 50

Single stranded wires with PVC-insulation

Con- ductor	Annotation	Type designation	Outer-Ø	Copper value	Net weight	Delivery length	Packaging	Order-Number
Strand mm ²			mm	kg/km	kg/km	m		
0.54	UL-Style 1007, CSA	LIY 1x0.54/2.0 VZN BR	1.8	5.4	7.5	800	coil	V45571-C 101-A 40
0.54	UL-Style 1007, CSA	LIY 1x0.54/2.0 VZN RT	1.8	5.4	7.5	800	coil	V45571-C 102-A 40
0.54	UL-Style 1007, CSA	LIY 1x0.54/2.0 VZN GE	1.8	5.4	7.5	800	coil	V45571-C 104-A 40
0.54	UL-Style 1007, CSA	LIY 1x0.54/2.0 VZN BL	1.8	5.4	7.5	800	coil	V45571-C 106-A 40
0.54	UL-Style 1007, CSA	LIY 1x0.54/2.0 VZN GR	1.8	5.4	7.5	800	coil	V45571-C 108-A 40
0.54	UL-Style 1007, CSA	LIY 1x0.54/2.0 VZN WS	1.8	5.4	7.5	800	coil	V45571-C 109-A 50
0.54	UL-Style 1007, CSA	LIY 1x0.54/2.0 VZN SW	1.8	5.4	7.5	800	coil	V45571-C 110-A 40
0.54	UL-Style 1007, CSA	LIY 1x0.54/2.0 VZN GNGE	1.8	5.4	7.5	800	coil	V45571-C 131-A 20
0.54	UL-Style 1015, CSA	LIY 1x0.54/2.8 VZN BR	2.6	5.4	11.5	450	coil	V45571-C 101-A 70
0.54	UL-Style 1015, CSA	LIY 1x0.54/2.8 VZN BL	2.6	5.4	11.5	450	coil	V45571-C 106-A 70
0.56	UL-Style 1007, CSA	LIY 1x0.56/1.8 VZN BL	1.8	5.6	7.5	100	ring	V45571-C 106-A110
0.56	UL-Style 1007, CSA	LIY 1x0.56/1.8 VZN RT	1.8	5.6	7.5	100	ring	V45571-C 102-A110
0.56	UL-Style 1007, CSA	LIY 1x0.56/1.8 VZN RT	1.8	5.6	7.5	1000	coil	V45571-C 102-A110-L7
0.56	UL-Style 1007, CSA	LIY 1x0.56/1.8 VZN WS	1.8	5.6	7.5	500	coil	V45571-C 109-A110
0.56	UL-Style 1007, CSA	LIY 1x0.56/1.8 VZN SW	1.8	5.6	7.5	2500	coil	V45571-C 110-A 60-L9
0.75	VDE 0812	LIY 1x0.75/2.0 VZN BR	2.0	7.7	9.8	250	ring	V45571-D 101-A
0.75	VDE 0812	LIY 1x0.75/2.0 VZN RT	2.0	7.7	9.8	250	ring	V45571-D 102-A
0.75	VDE 0812	LIY 1x0.75/2.0 VZN GE	2.0	7.7	9.8	250	ring	V45571-D 104-A
0.75	VDE 0812	LIY 1x0.75/2.0 VZN GN	2.0	7.7	9.8	250	ring	V45571-D 105-A
0.75	VDE 0812	LIY 1x0.75/2.0 VZN BL	2.0	7.7	9.8	250	ring	V45571-D 106-A
0.75	VDE 0812	LIY 1x0.75/2.0 VZN GR	2.0	7.7	9.8	250	ring	V45571-D 108-A
0.75	VDE 0812	LIY 1x0.75/2.0 VZN WS	2.0	7.7	9.8	250	ring	V45571-D 109-A
0.75	VDE 0812	LIY 1x0.75/2.0 VZN SW	2.0	7.7	9.8	250	ring	V45571-D 110-A
0.75	UL-Style 1674, CSA	LIY 1x0.75/2.0 VZN GE	2.0	7.7	9.8	250	ring	V45571-D 104-A 50
0.75	UL-Style 1674, CSA	LIY 1x0.75/2.0 VZN BL	2.0	7.7	9.8	2000	coil	V45571-D 106-A 60-L8
0.75	UL-Style 1674, CSA	LIY 1x0.75/2.0 VZN SW	2.0	7.7	9.8	250	ring	V45571-D 110-A 60
0.75	UL-Style 1674, CSA	LIY 1x0.75/2.0 VZN GNGE	2.0	7.7	9.8	250	ring	V45571-D 131-A 10
0.86	UL-Style 1007, CSA	LIY 1x0.86/2.2 VZN BR	2.1	8.6	10.8	750	coil	V45571-E 101-A 10
0.86	UL-Style 1007, CSA	LIY 1x0.86/2.2 VZN RT	2.1	8.6	10.8	750	coil	V45571-E 102-A 10
0.86	UL-Style 1007, CSA	LIY 1x0.86/2.2 VZN GE	2.1	8.6	10.8	750	coil	V45571-E 104-A 10
0.86	UL-Style 1007, CSA	LIY 1x0.86/2.2 VZN SW	2.1	8.6	10.8	750	coil	V45571-E 110-A 10
0.86	UL-Style 1007, CSA	LIY 1x0.86/2.2 VZN GNGE	2.1	8.6	10.8	750	coil	V45571-E 131-A 10

Single stranded wires with PVC-insulation

Con- ductor	Annotation	Type designation	Outer-Ø	Copper value	Net weight	Delivery length	Packaging	Order-Number
Strand mm ²			mm	kg/km	kg/km	m		
0.86	UL-Style 1007, CSA	LIY 1x0.86/2.2 VZN BL	2.1	8.6	10.8	750	coil	V45571-E 106-A 30
0.86	UL-Style 1007, CSA	LIY 1x0.86/3.0 VZN GE	2.9	8.6	15.1	450	coil	V45571-E 104-A 30
0.93	UL-Style 1007, CSA	LIY 1x0.93/2.1 VZN SW	2.1	9.5	11.6	1500	coil	V45571-E 110-A 50
0.93	UL-Style 1007, CSA	LIY 1x0.93/2.1 VZN	2.1	9.5	11.4	1500	coil	V45571-E 131-A 60
1.0	VDE 0812, UL-Style 1007	LIY 1x1.0/2.1 VZN BR	2.2	10.3	12.6	250	ring	V45571-E 101-A
1.0	VDE 0812, UL-Style 1007	LIY 1x1.0/2.1 VZN RT	2.2	10.3	12.6	250	ring	V45571-E 102-A
1.0	VDE 0812, UL-Style 1007	LIY 1x1.0/2.1 VZN GE	2.2	10.3	12.6	250	ring	V45571-E 104-A
1.0	VDE 0812, UL-Style 1007	LIY 1x1.0/2.1 VZN BL	2.2	10.3	12.6	250	ring	V45571-E 106-A
1.0	VDE 0812, UL-Style 1007	LIY 1x1.0/2.1 VZN GR	2.2	10.3	12.6	250	ring	V45571-E 108-A
1.0	VDE 0812, UL-Style 1007	LIY 1x1.0/2.1 VZN SW	2.2	10.3	12.6	250	ring	V45571-E 110-A
1.0	VDE 0812, UL-Style 1095	LIY 1x1.0/2.1 VZN BRGN	2.1	10.3	12.1	250	ring	V45571-E 127-A
1.0	VDE 0812, UL-Style 1095	LIY 1x1.0/2.1 VZN GERT	2.1	10.3	12.1	250	ring	V45571-E 134-A
1.0	VDE 0812, UL-Style 1095	LIY 1x1.0/2.1 VZN RSSW	2.1	10.3	12.1	250	ring	V45571-E 169-A
1.0	VDE 0812, UL-Style 1095	LIY 1x1.0/2.1 VZN GE	2.1	10.3	12.1	250	ring	V45571-E 179-A
1.0	VDE 0812, UL-Style 1095	LIY 1x1.0/2.1 VZN RTGR	2.1	10.3	12.1	250	ring	V45571-E 199-A
1.34	UL-Style 1007, CSA	LIY 1x1.34/2.6 VZN BR	2.5	13.7	16.8	500	coil	V45571-F 101-A 30
1.34	UL-Style 1007, CSA	LIY 1x1.34/2.6 VZN RT	2.5	13.7	16.8	500	coil	V45571-F 102-A 30
1.34	UL-Style 1007, CSA	LIY 1x1.34/2.6 VZN GE	2.5	13.7	16.8	500	coil	V45571-F 104-A 30
1.34	UL-Style 1007, CSA	LIY 1x1.34/2.6 VZN BL	2.5	13.7	16.8	500	coil	V45571-F 106-A 10
1.34	UL-Style 1007, CSA	LIY 1x1.34/2.6 VZN SW	2.5	13.7	16.8	500	coil	V45571-F 110-A 10
1.34	UL-Style 1007, CSA	LIY 1x1.34/2.6 VZN GNGE	2.5	13.7	16.9	450	coil	V45571-F 131-A
1.34	UL-Style 1015, CSA	LIY 1x1.34/3.4 VZN GE	3.4	13.7	22.3	300	coil	V45571-F 104-A 40
1.34	UL-Style 1015, CSA	LIY 1x1.34/3.4 VZN BL	3.4	13.7	22.3	300	coil	V45571-F 106-A 40
1.34	UL-Style 1015, CSA	LIY 1x1.34/3.5 VZN SW	3.4	13.7	22.4	300	coil	V45571-F 110-A100
1.5		LIY 1x1.5/2.6 VZN BL	2.6	14.7	18.0	200	ring	V45571-F 106-A
1.5		LIY 1x1.5/2.6 VZN GR	2.6	14.7	18.0	200	ring	V45571-F 108-A
1.5		LIY 1x1.5/2.6 VZN SW	2.6	14.7	18.0	200	ring	V45571-F 110-A
1.5	UL-Style 1500, CSA	LIY 1x1.5/3.5 SW	3.5	15.4	24.0	500	coil	V45571-F 110-A110
2.1	UL-Style 1015	LIY 1x2.1/3.6 VZN SW	3.6	20.7	29.0	2000	coil	V45571-G 110-A 20
2.5		LIY 1x2.5/3.3 SW	3.3	24.4	28.8	100	cone	V45571-G 110-A 10
25.0		LIY 1x25/10.1 SW	10.1	246.3	273.5	1000	drum	V45571-V 110-A 30

Stranded wires with PVC-insulation, twisted

**PVC-insulated
and twisted stranded wire**
UL-Style 1007, CSA
Type: LIY 2x1.34/2.6 VZN BR/GE
Order-No.: V45571-F 249-A



Application

These cables are commonly used for electronic, information processing and telecommunications applications to connect devices or installations which are exposed to moderate stress.

Construction

Strands made of copper wires, bare or tinned
Insulation of PVC

Constructions are available complying with

- DIN VDE, MIL, BS, EN, IEC
- UL and CSA

Technical characteristics

vary according to the relevant specification

Core identification

colour coding,
ring marking or number printing

Operating voltage

up to 3000 V

Test voltage

up to 4000

Temperature range

for standard applications:

– 5 °C up to 70 °C

for advanced requirements:

– 20 °C up to 80 °C (105 °C)

Con-ductor	Annotation	Type designation	Outer-Ø	Copper value	Net weight	Delivery length	Packaging	Order-Number
Strand mm ²			mm	kg/km	kg/km	m		
2 x 0.54	UL-Style 1007, CSA	LIY 2x0.54/2.0 VZN GE/GR	3.7	10.8	15.1	800	coil	V45571-C 239-A
2 x 0.75		LIY 2x0.75/2.0 VZN GN/BL	4.0	15.5	19.8	100	cone	V45571-D 228-A
2 x 0.75		LIY 2x0.75/2.0 VZN GE/SW	4.0	15.5	19.8	100	cone	V45571-D 265-A
2 x 0.86	UL-Style 1007, CSA	LIY 2x0.86/2.2 GE/GR	4.2	17.8	22.3	250	coil	V45571-E 239-A 10
2 x 1.34	UL-Style 1007, CSA	LIY 2x1.34/2.6 VZN BR/GE	5.1	27.9	34.3	500	coil	V45571-F 249-A
2 x 1.34	UL-Style 1007, CSA	LIY 2x1.34 VZN BR/GE	5.1	35.1	43.2	250	coil	V45571-F 249-A 10
3 x 1.34	UL-Style 1007, CSA	LIY 3x1.34/2.6 VZN BR/RT/BL	5.5	41.8	51.4	500	coil	V45571-F 399-A

Stranded wires with ETFE-insulation

ETFE-insulated stranded wire

VDE 0881, UL-Style 1586

Type: LI7Y 1x1.3/2.0 VS SW

Order-No.: V45571-Q 110-H



Application

These cables are commonly used for electronic, information processing and telecommunications applications for moving connections. ETFE-insulated wires are used when advanced electrical characteristics are required and for applications which are exposed to thermal or mechanical stress.

Construction

Strand made of copper or copper alloy according to the application the wires are of bare, tinned, silver-plated or nickelized copper.

ETFE-insulation

Constructions are available complying with

- DIN VDE, MIL, BS, EN, IEC
- UL and CSA

Technical characteristics

vary according to the relevant specification

Core identification

Colour coding, ring marking

Operating voltage

up to 1500 V

Test voltage

up to 2500 V

Temperature range

– 90 °C up to 135 °C (150 °C)

Temperature range for

bare copper wire:

up to 135 °C

tinned copper wire:

up to 125 °C

Remark

Products with stranded and/or screened cores are also available

Conductor	Annotation	Type designation	Outer-Ø	Copper value	Net weight	Delivery length	Packaging	Order-Number
Strand mm ²			mm	kg/km	kg/km	m		
0.06	UL-Style 1516	LI7Y 1x0.06/0.51 VZN NF	0.5	0.6	0.7	10 000	coil	V45571-T 112-H
0.06	UL-Style 1516	LI7Y 1x0.06/0.51 VZN NFSW	0.5	0.6	0.7	10 000	coil	V45571-T 199-H
0.12	VDE 0881, UL-Style 1517	LI7Y 1x0.12/1.0 VS RT	1.0	1.2	2.2	1300	coil	V45571-A 102-H
0.12	VDE 0881, UL-Style 1517	LI7Y 1x0.12/1.0 VS GE	1.0	1.2	2.2	1300	coil	V45571-A 104-H
0.12	VDE 0881, UL-Style 1517	LI7Y 1x0.12/1.0 VS WS	1.0	1.2	2.2	1300	coil	V45571-A 109-H
0.12	VDE 0881, UL-Style 1517	LI7Y 1x0.12/1.0 VS SW	1.0	1.2	2.2	1300	coil	V45571-A 110-H
0.14	UL-Style 1517, CSA	LI7Y 1x0.14/1.05 VS RT	1.0	1.5	2.5	2000	coil	V45571-A 102-H 20
0.14	UL-Style 1517, CSA	LI7Y 1x0.14/1.05 VS WS	1.0	1.5	2.5	2000	coil	V45571-A 109-H 20
0.22	VDE 0881, UL-Style 1517, CSA	LI7Y 1x0.22/1.1 VS BR	1.1	2.3	3.2	2000	coil	V45571-B 101-H
0.22	VDE 0881, UL-Style 1517, CSA	LI7Y 1x0.22/1.1 VS RT	1.1	2.3	3.2	2000	coil	V45571-B 102-H
0.22	VDE 0881, UL-Style 1517, CSA	LI7Y 1x0.22/1.1 VS OR	1.1	2.3	3.2	2000	coil	V45571-B 103-H
0.22	VDE 0881, UL-Style 1517, CSA	LI7Y 1x0.22/1.1 VS GE	1.1	2.3	3.2	2000	coil	V45571-B 104-H
0.22	VDE 0881, UL-Style 1517, CSA	LI7Y 1x0.22/1.1 VS GN	1.1	2.3	3.2	2000	coil	V45571-B 105-H
0.22	VDE 0881, UL-Style 1517, CSA	LI7Y 1x0.22/1.1 VS BL	1.1	2.3	3.2	2000	coil	V45571-B 106-H
0.22	VDE 0881, UL-Style 1517, CSA	LI7Y 1x0.22/1.1 VS VI	1.1	2.3	3.2	2000	coil	V45571-B 107-H
0.22	VDE 0881, UL-Style 1517, CSA	LI7Y 1x0.22/1.1 VS GR	1.1	2.3	3.2	2000	coil	V45571-B 108-H
0.22	VDE 0881, UL-Style 1517, CSA	LI7Y 1x0.22/1.1 VS WS	1.1	2.3	3.2	2000	coil	V45571-B 109-H
0.22	VDE 0881, UL-Style 1517, CSA	LI7Y 1x0.22/1.1 VS SW	1.1	2.3	3.2	2000	coil	V45571-B 110-H
0.34	VDE 0881, UL-Style 1517	LI7Y 1x0.34/1.3 VS BR	1.3	3.5	4.6	1500	coil	V45571-P 101-H
0.34	VDE 0881, UL-Style 1517	LI7Y 1x0.34/1.3 VS RT	1.3	3.5	4.6	1500	coil	V45571-P 102-H

Stranded wires with ETFE-insulation

Con-ductor	Annotation	Type designation	Outer-Ø	Copper value	Net weight	Delivery length	Packaging	Order-Number
Strand mm ²			mm	kg/km	kg/km	m		
0.34	VDE 0881, UL-Style 1517	LI7Y 1x0.34/1.3 VS GE	1.3	3.5	4.6	800	coil	V45571-P 104-H
0.34	VDE 0881, UL-Style 1517	LI7Y 1x0.34/1.3 VS GN	1.3	3.5	4.6	800	coil	V45571-P 105-H
0.34	VDE 0881, UL-Style 1517	LI7Y 1x0.34/1.3 VS BL	1.3	3.5	4.6	1500	coil	V45571-P 106-H
0.34	VDE 0881, UL-Style 1517	LI7Y 1x0.34/1.3 VS WS	1.3	3.5	4.6	800	coil	V45571-P 109-H
0.34	VDE 0881, UL-Style 1517	LI7Y 1x0.34/1.3 VS SW	1.3	3.5	4.6	1500	coil	V45571-P 110-H
0.34	VDE 0881, UL-Style 1517	LI7Y 1x0.34/1.3 VS GNGE	1.3	3.5	4.7	800	coil	V45571-P 131-H
0.56	VDE 0881, UL-Style 1517	LI7Y 1x0.56/1.5 VS BR	1.5	5.8	6.9	900	coil	V45571-C 101-H
0.56	VDE 0881, UL-Style 1517	LI7Y 1x0.56/1.5 VS RT	1.5	5.8	6.9	900	coil	V45571-C 102-H
0.56	VDE 0881, UL-Style 1517	LI7Y 1x0.56/1.5 VS GE	1.5	5.8	6.9	900	coil	V45571-C 104-H
0.56	VDE 0881, UL-Style 1517	LI7Y 1x0.56/1.5 VS GN	1.5	5.8	6.9	900	coil	V45571-C 105-H
0.56	VDE 0881, UL-Style 1517	LI7Y 1x0.56/1.5 VS BL	1.5	5.8	6.9	900	coil	V45571-C 106-H
0.56	VDE 0881, UL-Style 1517	LI7Y 1x0.56/1.5 VS VI	1.5	5.8	6.9	900	coil	V45571-C 107-H
0.56	VDE 0881, UL-Style 1517	LI7Y 1x0.56/1.5 VS GR	1.5	5.8	6.9	900	coil	V45571-C 108-H
0.56	VDE 0881, UL-Style 1517	LI7Y 1x0.56/1.5 VS WS	1.5	5.8	6.9	900	coil	V45571-C 109-H
0.56	VDE 0881, UL-Style 1517	LI7Y 1x0.56/1.5 VS SW	1.5	5.8	6.9	900	coil	V45571-C 110-H
0.56	VDE 0881, UL-Style 1517	LI7Y 1x0.56/1.5 VS GNGE	1.5	5.8	6.9	900	coil	V45571-C 131-H
0.62	MIL-W22759/16	LI7Y 1x.62/1.54 SW	1.5	6.1	7.3	900	coil	V45571-D 110-H
0.62		LI7Y 1x0.62/1.37 VZN SW	1.4	6.1	6.6	1000	coil	V45571-D 110-H 20
0.93	VDE 0881, UL-Style 1610, CSA	LI7Y 1x0.93/1.8 VS BR	1.8	9.6	10.8	600	coil	V45571-E 101-H
0.93	VDE 0881, UL-Style 1610, CSA	LI7Y 1x0.93/1.8 VS RT	1.8	9.6	10.8	600	coil	V45571-E 102-H
0.93	VDE 0881, UL-Style 1610, CSA	LI7Y 1x0.93/1.8 VS GE	1.8	9.6	10.8	600	coil	V45571-E 104-H
0.93	VDE 0881, UL-Style 1610, CSA	LI7Y 1x0.93/1.8 VS GN	1.8	9.6	10.8	600	coil	V45571-E 105-H
0.93	VDE 0881, UL-Style 1610, CSA	LI7Y 1x0.93/1.8 VS BL	1.8	9.6	10.8	600	coil	V45571-E 106-H
0.93	VDE 0881, UL-Style 1610, CSA	LI7Y 1x0.93/1.8 VS GR	1.8	9.6	10.8	600	coil	V45571-E 108-H
0.93	VDE 0881, UL-Style 1610, CSA	LI7Y 1x0.93/1.8 VS WS	1.8	9.6	10.8	600	coil	V45571-E 109-H
0.93	VDE 0881, UL-Style 1610, CSA	LI7Y 1x0.93/1.8 VS SW	1.8	9.6	10.8	600	coil	V45571-E 110-H
1.23	UL-Style 1007, CSA	LIY 1x1.23/2.25 WS	2.2	12.3	14.1	500	coil	V45571-Q 109-A 30
1.3	VDE 0881, UL-Style 1586	LI7Y 1x1.3/2.0 VS BR	2.0	12.3	13.5	500	coil	V45571-Q 101-H

Stranded wires with ETFE-insulation

Con- ductor	Annotation	Type designation	Outer-Ø	Copper value	Net weight	Delivery length	Packaging	Order-Number
Strand mm ²			mm	kg/km	kg/km	m		
1.3	VDE 0881, UL-Style 1586	LI7Y 1x1.3/2.0 VS RT	2.0	12.3	13.5	500	coil	V45571-Q 102-H
1.3	VDE 0881, UL-Style 1586	LI7Y 1x1.3/2.0 VS BL	2.0	12.3	13.5	500	coil	V45571-Q 106-H
1.3	VDE 0881, UL-Style 1586	LI7Y 1x1.3/2.0 VS GR	2.0	12.3	13.5	500	coil	V45571-Q 108-H
1.3	VDE 0881, UL-Style 1586	LI7Y 1x1.3/2.0 VS WS	2.0	12.3	13.5	500	coil	V45571-Q 109-H
1.3	VDE 0881, UL-Style 1586	LI7Y 1x1.3/2.0 VS SW	2.0	12.3	13.5	500	coil	V45571-Q 110-H
1.3	VDE 0881, UL-Style 1586	LI7Y 1x1.3/2.0 VS GNGE	2.0	12.3	13.6	500	coil	V45571-Q 131-H
1.9	VDE 0881, UL-Style 1610	LI7Y 1x1.9/2.3 VS BR	2.3	19.4	20.1	350	coil	V45571-R 101-H
1.9	VDE 0881, UL-Style 1610	LI7Y 1x1.9/2.3 VS RT	2.3	19.4	20.1	350	coil	V45571-R 102-H
1.9	VDE 0881, UL-Style 1610	LI7Y 1x1.9/2.3 VS BL	2.3	19.4	20.1	350	coil	V45571-R 106-H
1.9	VDE 0881, UL-Style 1610	LI7Y 1x1.9/2.3 VS GR	2.3	19.4	20.1	350	coil	V45571-R 108-H
1.9	VDE 0881, UL-Style 1610	LI7Y 1x1.9/2.3 VS SW	2.3	19.4	20.1	350	coil	V45571-R 110-H
1.9	UL-Style 1586, CSA	LI7Y 1x2.5/2.8 VZN RT	2.8	25.0	26.6	290	coil	V45571-G 102-H 10
3.2	VDE 0881, UL-Style 1610	LI7Y 1x3.2/2.8 VS RT	2.8	30.7	31.0	250	coil	V45571-H 102-H
3.2	VDE 0881, UL-Style 1610	LI7Y 1x3.2/2.8 VS GR	2.8	30.7	31.0	250	coil	V45571-H 108-H
3.2	VDE 0881, UL-Style 1610	LI7Y 1x3.2/2.8 VS SW	2.8	30.7	31.0	250	coil	V45571-H 110-H
3.2	VDE 0881, UL-Style 1610	LI7Y 1x3.2/2.8 GNGE VS	2.8	30.7	31.0	250	coil	V45571-H 131-H
4.6		LI7Y 1x4.6/3.3 VS SW	3.3	47.4	46.3	150	coil	V45571-N 110-H
4.6		LI7Y 1x4.6/3.4 GNGE VS	3.3	47.4	46.3	150	coil	V45571-N 131-H
2 x 0.56	twisted, VDE 0881, UL-Style 1517	LI7Y 2x0.56/1.5 VS	3.0	11.7	14.0	200	coil	V45571-C 243-H
2 x 0.56	twisted, VDE 0881, UL-Style 1517	LI7Y 2x0.56/1.5 VS	3.0	11.7	14.0	200	coil	V45571-C 252-H

Insulated, stranded wires for special applications

Double TPE-insulation

Type: L-99Y99Y 1x2.5/3.95 SW

Order-No.: L45571-G 110-W 9



For specific requirements we develop customised cables with different insulation materials.

Constructions are available complying with

- DIN VDE, MIL, BS, EN, IEC
- UL and CSA

Characteristics of different insulation materials:

- PE: very good electrical characteristics
temperature range – 50°C up to 70°C
- PA: good resistance to mechanical stress,
economical
temperature range – 30°C up to 105°C
- PETP: good tear resistance even with
minimal wall thickness
temperature range – 20°C up to 100°C
- Silicon: halogen-free,
very high temperature resistance,
very flexible
temperature range – 55°C up to 180°C
- PVDF: good tear resistance,
very good resistance to chemicals
temperature range – 40°C up to 135°C
- PEEK: halogen-free,
radiation resistant,
high temperature resistance
temperature range – 50°C up to 220°C
- FEP: high temperature resistance,
good tear resistance,
good resistance to chemicals
temperature range – 90°C up to 200°C
- PFA: high temperature resistance,
good tear resistance,
good resistance to chemicals
temperature range – 90°C up to 260°C

Conductor	Annotation	Type designation	Outer-Ø	Copper value	Net weight	Delivery length	Packaging	Order-Number
Strand mm ²			mm	kg/km	kg/km	m		
0.035	PE insulated	LI2Y 1x0.035/0.5 VZN RT	0.5	0.3	0.4	20 000	coil	L45571-U 102-B
0.035	PE insulated	LI2Y 1x0.035/0.5 VZN BL	0.5	0.3	0.4	20 000	coil	L45571-U 106-B
0.09	foamed PE with SKIN	LI02YS 0.09/0.9 VZN WS	0.9	1.0	1.2	4000	coil	V45571-K 109-C
0.15	foamed PE with SKIN	LI02YS 0.09/0.9 VZN RT	0.9	1.0	1.2	4000	coil	V45571-K 102-C
0.15	UL-Style 1538	LI6Y 1x0.15/1.10 VZN BR	1.1	1.6	3.0	5000	coil	L45571-L 101-G
0.15	UL-Style 1538	LI6Y 1x0.15/1.10 VZN RT	1.1	1.6	3.0	5000	coil	L45571-L 102-G
0.15	UL-Style 1538	LI6Y 1x0.15/1.10 VZN OR	1.1	1.6	3.0	5000	coil	L45571-L 103-G
0.15	UL-Style 1538	LI6Y 1x0.15/1.10 VZN GE	1.1	1.6	3.0	5000	coil	L45571-L 104-G
0.15	UL-Style 1538	LI6Y 1x0.15/1.10 VZN GN	1.1	1.6	3.0	5000	coil	L45571-L 105-G
0.15	UL-Style 1538	LI6Y 1x0.15/1.10 VZN BL	1.1	1.6	3.0	5000	coil	L45571-L 106-G
0.15	UL-Style 1538	LI6Y 1x0.15/1.10 VZN VI	1.1	1.6	3.0	5000	coil	L45571-L 107-G
0.15	UL-Style 1538	LI6Y 1x0.15/1.10 VZN GR	1.1	1.6	3.0	5000	coil	L45571-L 108-G
0.15	UL-Style 1538	LI6Y 1x0.15/1.10 VZN WS	1.1	1.6	3.0	5000	coil	L45571-L 109-G
0.15	UL-Style 1538	LI6Y 1x0.15/1.10 VZN SW	1.1	1.6	3.0	5000	coil	L45571-L 110-G
0.15	UL-Style 1538	LI6Y 1x0.15/1.10 VZN RS	1.1	1.6	3.0	5000	coil	L45571-L 111-G
0.15	UL-Style 1538	LI6Y 1x0.15/1.10 VZN NF	1.1	1.6	3.0	5000	coil	L45571-L 112-G
0.15	UL-Style 1538	LI6Y 1x0.15/1.10 VZN GNGE	1.1	1.6	3.0	5000	coil	L45571-L 131-G
0.34	foamed PE with SKIN	LI02YS 1x0.34/2.75 RT	2.7	3.5	6.4	5000	drum	L45571-P 102-C 10
0.34	foamed PE with SKIN	LI02YS 1x0.34/2.75 GN	2.7	3.5	6.4	5000	drum	L45571-P 105-C 10
0.34	foamed PE with SKIN	LI02YS 1x0.34/2.75 WS	2.7	3.5	6.4	5000	drum	L45571-P 109-C 20
0.34	PETP	LI12Y 1x0.34/1.3 WS	1.3	3.5	4.2	5000	barrel	V45571-P 109-L 1
0.34	PETP	LI12Y 1x0.34/1.3 SW	1.3	3.5	4.2	5000	barrel	V45571-P 110-L 1
0.5	foamed PE with SKIN	LI02YS 1x0.5/2.0 VZN GE	2.0	5.4	6.4	5000	drum	L45571-C 104-C
0.5	foamed PE with SKIN	LI02YS 1x0.5/2.0 VZN GN	2.0	5.4	6.4	5000	drum	L45571-C 105-C
0.5	Silicon	LI2G 1x0.5/2.1 VZN GNGE	2.1	5.0	8.3	500	ring	V45571-C 131-M 10
0.5	Silicon	LI2G 1x0.5/2.1 VZN SW	2.1	5.1	8.3	1500	coil	V45571-C 110-M 10
0.5	TPE	LI99Y 1x0.5/1.5 SW	1.5	5.0	6.0	14 000	coil	V45571-C 110-W 10
0.5	FEP	LI6Y 1x0.5/1.5 BR	1.5	5.4	7.4	10 000	drum	V45571-C 127-G
0.62	PUR, UL+CSA	LIY11Y 1x0.62/1.9 GR 9002	3.8	6.2	18.6	2000	coil	V45571-D 108-A 9
0.9	PTFE	LI5Y 1x0.9/1.7 VS SW	1.7	9.0	12.0	1000	coil	V45571-E 110-F

Stranded wires for special applications

Conductor	Annotation	Type designation	Outer-Ø	Copper value	Net weight	Delivery length	Packaging	Order-Number
Strand mm ²			mm	kg/km	kg/km	m		
1.0	258 x 0.07-strand double TPE insulation	L-99Y99Y 1x1.0/3.95 SW	3.9	9.9	22.4	1000	drum	L45571-E 110-W
1.0	TPE, FRNC	LIH 1x1.0/2.1 BR VZN FRNC	2.1	10.3	12.4	250	ring	V45571-E 101-W
1.0	TPE, FRNC	LIH 1x1.0/2.1 RT VZN FRNC	2.1	10.3	12.4	250	ring	V45571-E 102-W
1.0	TPE, FRNC	LIH 1x1.0/2.1 BL VZN FRNC	2.1	10.3	12.4	250	ring	V45571-E 106-W
1.0	TPE, FRNC	LIH 1x1.0/2.1 WS VZN FRNC	2.1	10.3	12.4	250	ring	V45571-E 109-W
2.0	double PE insulation	LI2Y2Y 1x2.0/9.0 NF	12.4	19.8	127.4	3000	drum	V45571-R 112-B 16
2.0	FRNC, double TPE insulation	LIHH 1x2.0/9.0 NF KF20 FRNC	12.7	19.8	160.1	1000	drum	V45571-R 112-B 19
2.5	TPE, FRNC	LIH 1x2.5/3.3 RT VZN FRNC	3.3	24.4	29.3	100	ring	V45571-G 102-W
2.5	TPE, FRNC	LIH 1x2.5/3.3 BL VZN FRNC	3.3	24.4	29.3	100	ring	V45571-G 106-W
2.5	double TPE insulation	L-99Y99Y 1x2.5/3.95 SW	3.9	25.2	32.9	1000	drum	L45571-G 110-W 9
3.0	Silicon	LI2G 1x3.0/6.2 VZN RT	6.2	31.1	58.5	1000	drum	V45571-G 102-M
3.0	Silicon	LI2G 1x3.0/6.2 VZN SW	6.2	31.1	58.5	1000	drum	V45571-G 110-M
0.13	lightning protection UL-Style 1007, shielded	LI2YDDY 1x0.125/1.5 NF	2.9	7.1	14.8	800	coil	V45572-A 112-B 5
0.25	high-voltage cable shielded, 35KV DC, UL	LI(HS)2Y(HS)C11Y 0.25/5.0 VZN GR	8.4	29.6	81.0	1000	drum	V45572-B 112-B 9
0.35	PTFE, FEP, shielded	LI5YC6Y 1x0.35/1.3 WS VS	2.5	9.2		1000	coil	V45572-P 109-F 7
0.75	shielded	LIYCY 0.75/2.1 VZN GR	3.5	13.3	21.6	200	ring	V45572-D 108-A 5

**LEONI Special Cables
GmbH**

Eschstrasse 1
26169 Friesoythe
Phone +49-4491-292-292
Fax +49-4491-292-169
E-Mail info@lsc.leoni.com
www.leoni-special-cables.com